

Ricoh DDP 184
Digital Document Publisher
Affordable, high-volume printer
with spot color option.

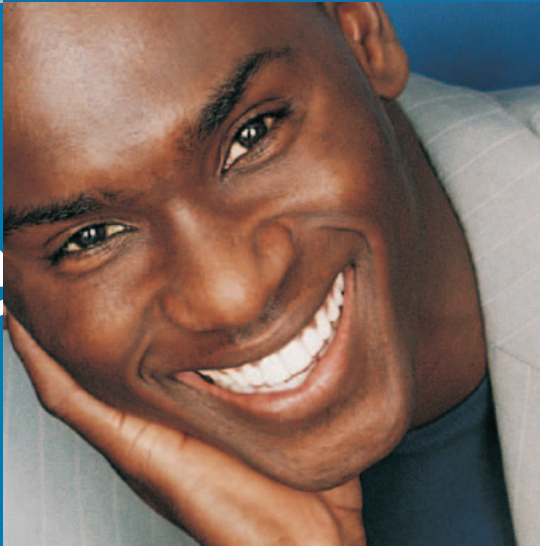
RICOH



fast



versatile



color

Ricoh DDP 184 Digital Document Publisher

The cost-effective way to improve productivity. Offering high-speed duplex with spot color, the RICOH® DDP 184 produces mission-critical documents such as invoices and billing statements, as well as booklets, direct mail, and more with minimal interruptions. All these advantages make it a perfect fit for high-volume, variable-data environments such as data centers, in-plant print shops, central reproduction departments and print-for-pay businesses.



ProductiveVersatileReliable

Fast, high-volume production.

Keep your production moving with tandem print engines that can output **184 images/minute in duplex black mode and up to 1.6 million images/month.**

- Enjoy virtually unattended and uninterrupted printing by adding up to two Container Stackers for up to 6,000 sheets of output.
- Eliminate production delays when you replace toner or load paper while continuing to print.
- Process and queue jobs to keep both engines printing at full speed thanks to the powerful front-end server. Standard emulations supported by the server include PCL5e, PCL 5c, TIFF, native PDF and Adobe® PostScript® 3™.
- Save time and minimize network congestion by sending compressed files—PDF, TIFF, PostScript® and ASCII—directly to the printer without opening an application.
- Save hours of production time with job management capabilities that enable you to manage job queues, create and even staple subsets within large jobs and cluster printers for load balancing.

Impressive Versatility.

Add in-line spot color for attention-grabbing documents and assign paper on a page-by-page basis in the same job, all from one, cost-effective system.

- Get attention by adding a second highlight color. Simply swap out the customer-replacable black toner and developer to print either black with black, red, warm red, green, cyan, blue or reflex blue.
- Create finished documents in a single pass using three standard, fully adjustable input trays that accept a wide range of custom paper sizes and weights, a bypass tray for heavier stocks, and a high-capacity feeder.
- Produce professional, customized mailings with the Ricoh Database Print Manager that merges templated documents with database records. Edge-to-edge printing provides more design flexibility to get attention.

Total Reliability.

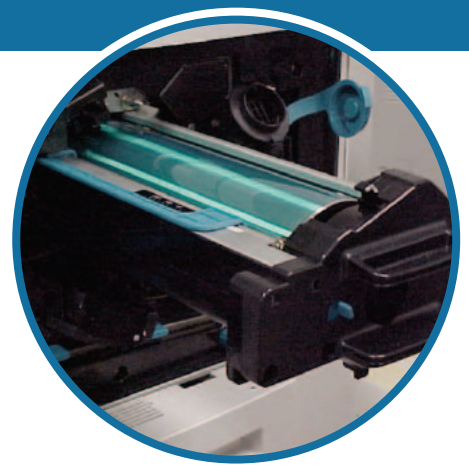
Spend less time servicing your printer and more time building productivity.

- Minimize service time and costs with the DDP 184's user-replaceable consumables.
- Handle high-volume production month after month—even two- or three-shift workloads and above “normal” volumes—without worrying about long downtime due to failures or service calls.

Connected and Accessible.

A high-performance print controller and network capabilities make the DDP 184 the perfect complement to any high-volume environment.

- Produce precision spot-color documents with user-friendly color separation controls. Easily separate and map characters, graphic shapes and image pixels to black or spot color.
- Easily access all printer functions and monitor queues, active jobs, finished jobs and RIPs using an intuitive DocXPLOER or web browser interface.
- Integrate the system easily into your network with data stream solutions that help you print from a mainframe.
- Improve your document workflow with custom applications—the flexible architecture of the DDP 184 accommodates most third-party software.



Rely on continuous printing with easy-to-change consumables.



Get attention by changing black toner to one of six different colors with minimal effort.

Your Environmental Partner



Ricoh continues our long-standing commitment to developing environmentally friendly office solutions with superior energy- and supply-saving features, including:

- Power-saving Sleep Mode
- Mixed Plex and MOPy Modes
- Minimal Ozone Emissions
- Restriction of Hazardous Substances (RoHS) Compliant

Ricoh DDP 184 Digital Document Publisher

System Specifications

Specifications

Print Speed (black/black) (simplex/duplex)	Letter/LEF: 92/92 ppm; 92/184 ipm Letter/SEF: 50/50 ppm; 50/100 ipm Legal/SEF: 50/50 ppm; 50/100 ipm Ledger/SEF: 46/46 ppm; 46/92 ipm
Print Speed (black/color) (simplex/duplex)	Letter/SEF: 50/25 ppm; 50/50 ipm Legal/SEF: 50/25 ppm; 50/50 ipm Ledger/SEF: 46/23 ppm; 46/46 ipm
PM Cycle (# of images)	Standard Finisher: 400,000
Duty Cycle (images/month)	Average: 600,000 Maximum: 1,600,000
Standard Input	3,150 sheets total Tray 1: 2,000 sheets (based on 20 lb. Bond) 8.27" x 11" to 12" x 18" Tray 2: 500 sheets (based on 20 lb. Bond) 5.5" x 7.2" to 12" x 18" Tray 3: 500 sheets (based on 20 lb. Bond) 5.5" x 7.2" to 12" x 18" Bypass Tray: 150 sheets (based on 20 lb. Bond) 5.5" x 7.2" to 12" x 18"
Maximum Input	6,150 sheets total Printer Engine: 3,150 sheets High Capacity Feeder: 3,000 sheets (based on 20 lb. Bond) 8.5" x 11" (LEF)
Standard Output	2,700 sheets total Standard Finisher: Multi-Position Stapling, Stacking, Offset Elevator Tray: 2,500 sheets Top Tray: 200 sheets (non-stapled) Face-up/Face-down stacking

Optional Output	6,000 sheets total Container Stackers: Up to two container stackers (4 containers) Letter and Ledger Maximum: 6,000 sheets (based on 20 lb. Bond) Letter/LEF and SEF: 8.5" x 11"/16 lb. Bond-90 lb. Index; 20 lb. Bond-90 lb. Index Legal/SEF: 8.5" x 14"/17 lb. Bond-90 lb. Index; 20 lb. Bond-90 lb. Index Ledger/SEF: 11" x 17"/16 lb. Bond-90 lb. Index; 20 lb. Bond-90 lb. Index
Paper Sizes/Weights** (black/black)	Minimum: 5.5" x 7.2"/16 lb. Bond-90 lb. Index Maximum: 12" x 18"/16 lb. Bond-90 lb. Index
Custom Sizes*	
*Maximum paper weight varies with type of paper stock used. Edge-to-edge printing (full bleed) is supported.	
**17-43 lb. Bond (90 lb. index) for bypass tray.	
Processor	2 x PowerPC 750FX (800 MHz)
Memory	DDR-SDRAM DIMM (PC2100) 128 MB RAM Maximum: 256 MB RAM
Hard Disk Drive	40 GB ATA HDD
Printer Ready	PDF, TIFF
Page Description Languages	PCL5e, Adobe® PostScript® 3™
Fonts	PCL5e: 80 Fonts PostScript 3: 136 Fonts
Resolution	600 x 600 dpi
MOP (Multiple Original Printing)	Standard
Duplex, Simplex	Standard
Error Recovery	Paper Jams
Embedded Web Server	Real-time device monitoring and configuration
Standard Interface	Ethernet 10 Base-T/100 Base-TX (autosensing)
Protocols	TCP/IP
Drivers	Drivers for Windows® 95/98/Me/NT4.0/2000/XP Server2003, PPD for Apple Macintosh OS 8/9/X

Power	Printer: 2 x 220V-240V, 15A (2 outlets required/Nema 6-15P (U.S.) DDP Print Server: 100-240V, 50 Hz/60 Hz
Weight	Printer: Minimum: 1,335 lbs.; Maximum: 2,217 lbs. DDP Print Server: 15.4 lbs. Micro-Tower PC
Dimensions (H x W x D)	Printer: Minimum: 44" x 110" x 30"; Maximum: 58" x 228" x 45"; DDP Print Server: 14" x 7" x 17"; Micro-Tower PC
Required Maintenance Area (W x D)	156" x 104"

Consumables (avg. yields)

Black toner	36,000 images @ 5% coverage (per bottle)
Color toner (Red, Warm Red, Green, Blue, Cyan, Reflex Blue)	80,000 images @ 1.5% coverage (per bottle)
Black Developer	480,000 images @ 80% utilization
Color Developer	480,000 images @ 80% utilization
Drum (2)	400,000 images @ 80% utilization
Fuser Cleaning Web (2)	320,000 images
Staple Cartridges	5,000 staples per cartridge (two cartridges per finisher)

Ricoh Consumables: For maximum performance and yield, we recommend using genuine Ricoh parts and supplies.



RICOH

www.ricoh-usa.com

Ricoh Corporation, Five Dedrick Place, West Caldwell, NJ 07006
Ricoh® and the Ricoh Logo are registered trademarks of Ricoh Company, Ltd. Windows® and Windows® 95/98/Me/NT4.0/2000/XP are registered trademarks of Microsoft Corporation. Macintosh®, Mac® OS and AppleTalk® are registered trademarks of Apple Computer, Inc. Adobe® and PostScript® are registered trademarks of Adobe Systems, Inc. PCL® is a registered trademark of Hewlett-Packard Company. All other trademarks are the property of their respective owners. Printed in U.S.A. on recycled paper. Print speed may be affected by network, application or PC performance. Specifications and external appearances are subject to change without notice. Products are shown with optional features.